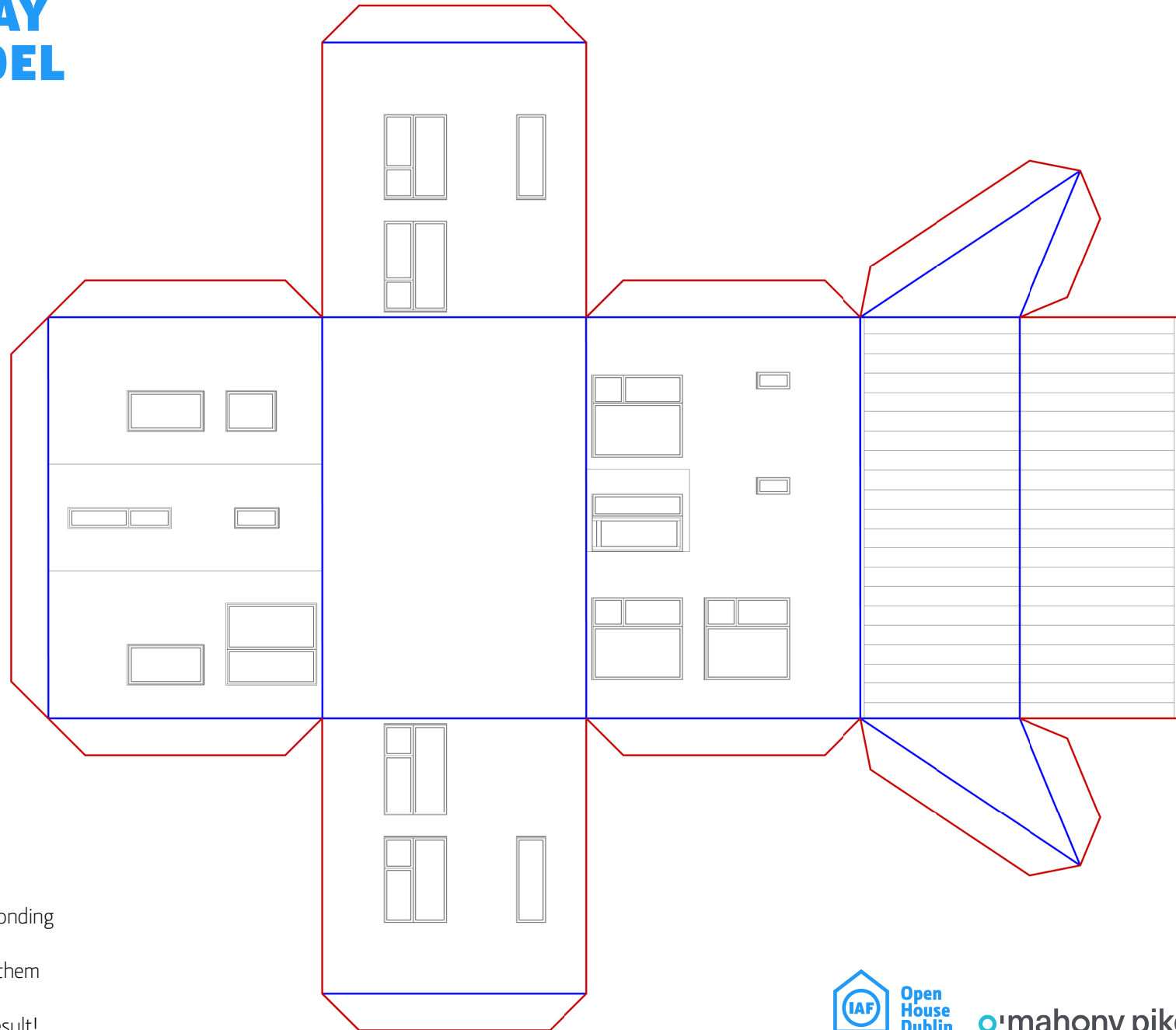


CLANCY QUAY HOUSE MODEL

You will need

- A4 Printer and Paper
- Scissors
- Glue



Instructions

1. Cut along the red lines.
2. Fold along the blue lines.
3. Glue the flaps with the corresponding sides to create a 3D block.
4. Print out some more and stick them together to make a terrace.
5. Send us a picture of the final result!

CAPITAL DOCK TOWER MODEL

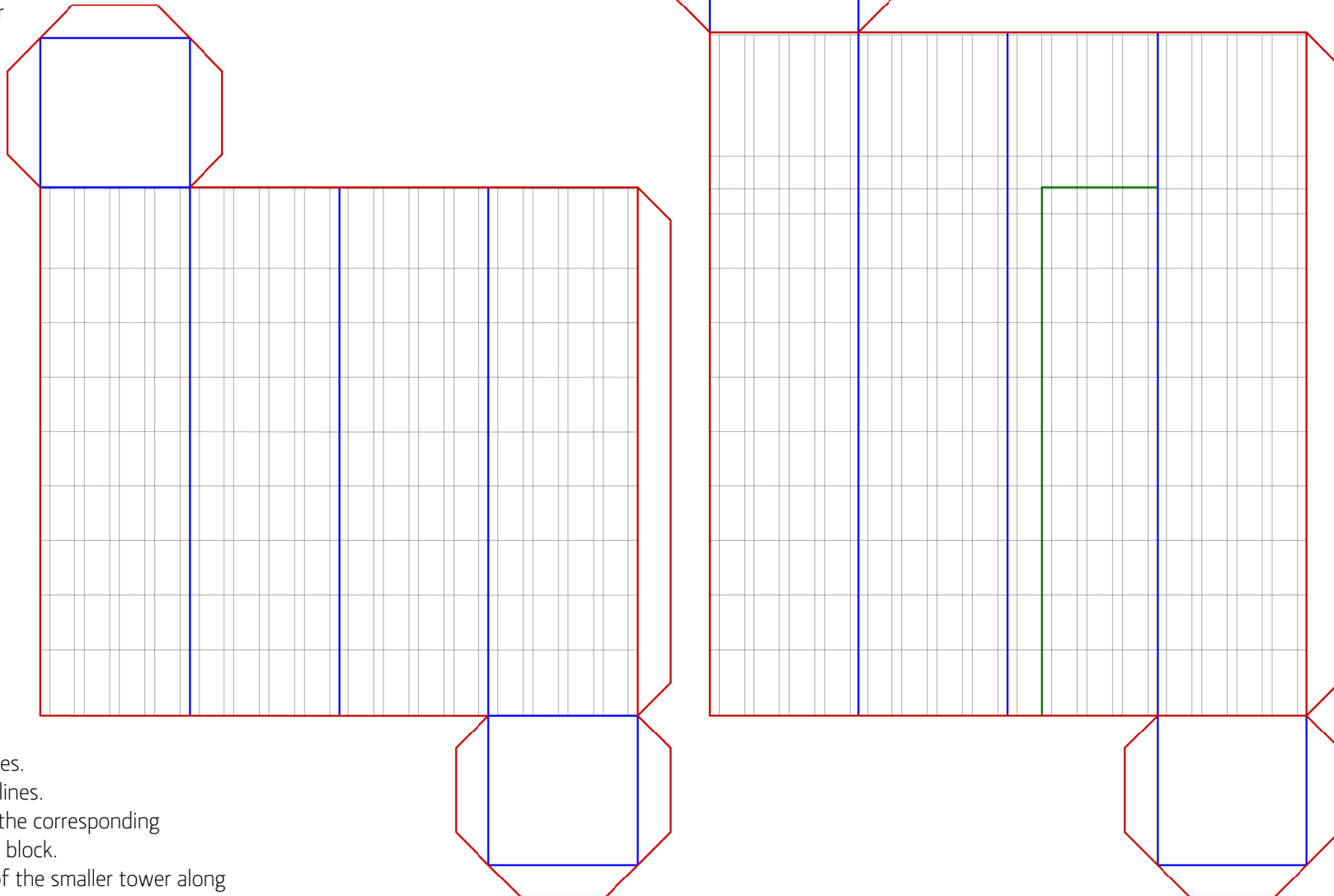


Open
House
Dublin

o'mahony pike

You will need

- A4 Printer and Paper
- Scissors
- Glue



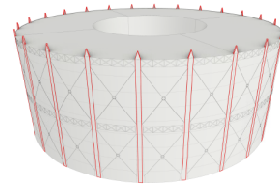
Instructions

1. Cut along the red lines.
2. Fold along the blue lines.
3. Glue the flaps with the corresponding sides to create a 3D block.
4. Position one edge of the smaller tower along the green line on the larger tower and glue.
5. Send us a picture of the final result!

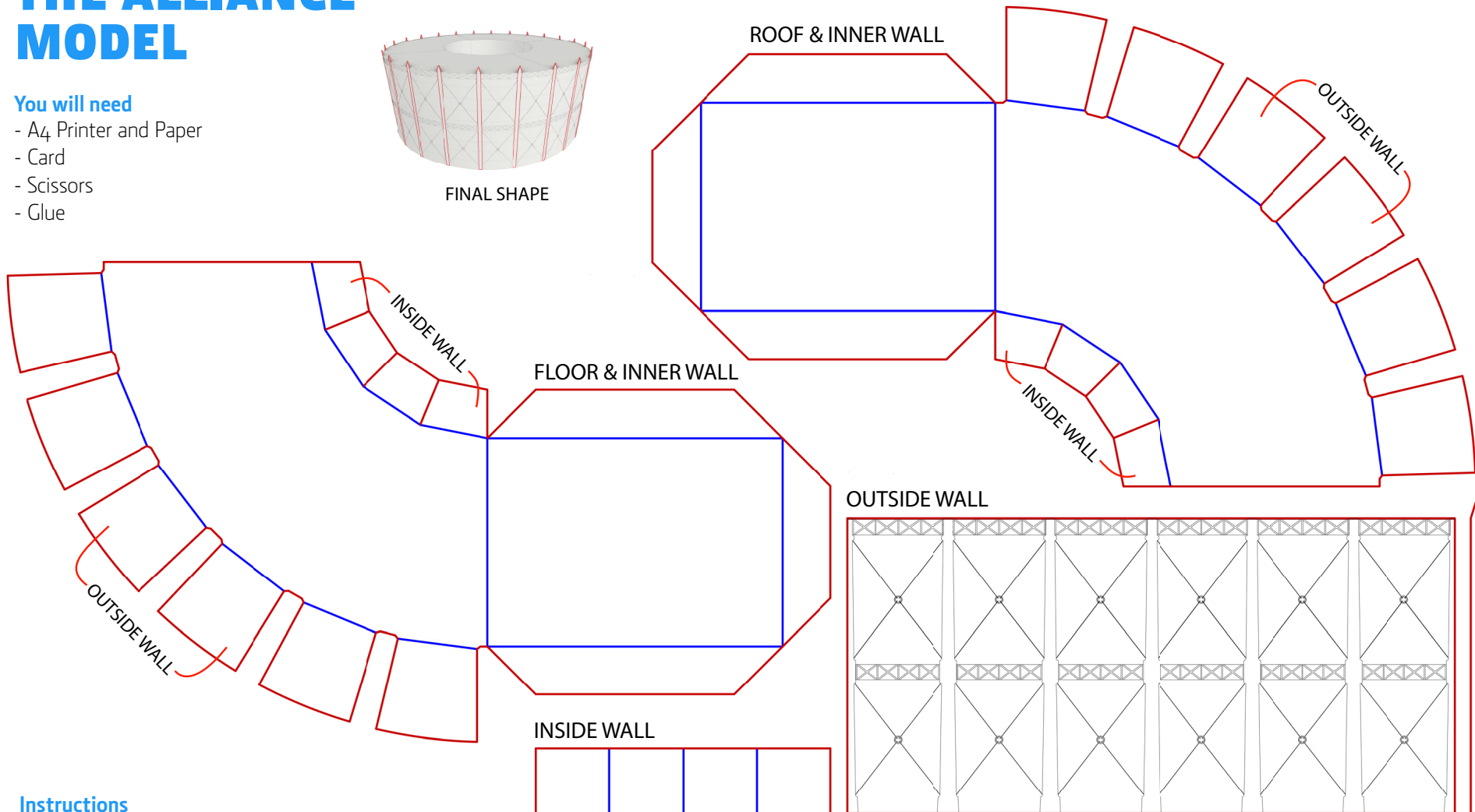
THE ALLIANCE MODEL

You will need

- A4 Printer and Paper
- Card
- Scissors
- Glue



FINAL SHAPE



Instructions

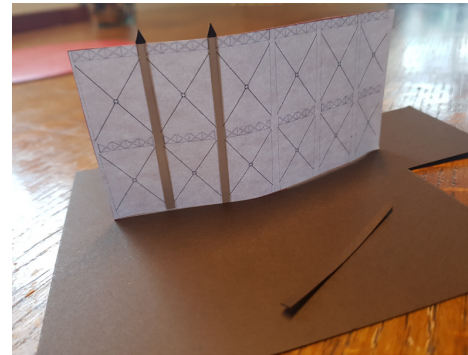
1. Cut along the red lines.
2. Fold along the blue lines.
3. Glue the flaps with the corresponding sides to create a 3D block.
4. Print and make 4 of these blocks and glue together to form the whole circle!
5. Send us a picture of the final result!

Make 6 of these in card and glue behind the pillars on the drawing.

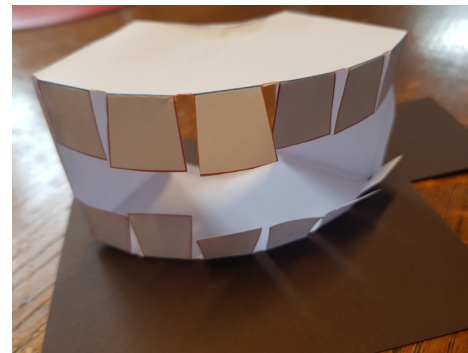
THE ALLIANCE MODEL

Assembly Guide

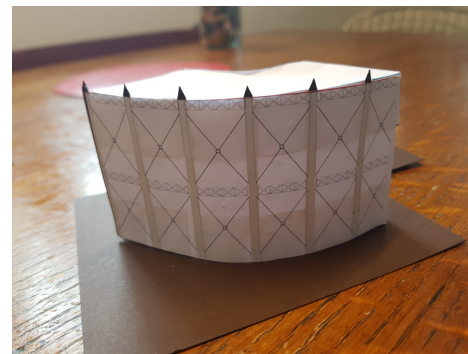
1. Glue the card pillars to the far side of the Outside Wall.



2. Create the main structure by gluing the Roof and Floor sections together using the tabs on the Inner Walls.



2. Add the Outside Wall and pillars first by gluing it to the tabs top and bottom. Finish by gluing the Inside Wall on the other side.



Open House Dublin

o'mahony pike